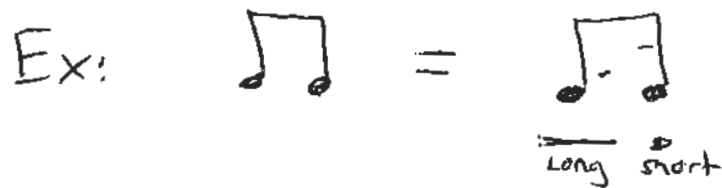


Name: _____
Instrument: Clarinet / Trumpet

Middle School SUMMER MUSIC PACKET For Jazz Students



When reading eighth notes in a "swing" feel,
Make the first note a little longer, and the second
note shorter.



Play the following rhythm samples:





3. Bb Blues ("Shuffle-Time")



PLAY 10 CHORUSES (♩ = 88)

By Jamey Aebersold

Learn the 3 scales and chords . . . memorize them. Listen to recordings of jazz blues musicians for ideas. Use swing "eighth" note feel. C blues scale will sound fine.

Sheet music for the main blues melody and accompaniment. The melody is written in treble clef, 4/4 time, with a shuffle feel. The accompaniment is in bass clef, 4/4 time, with a steady eighth-note bass line. Chords are indicated above the staff: A, C7, C7, A, F7, C7, G7, F7, C7, C7, G7, A.

SOLOS

Three lines of solo notation for the C7, F7, and G7 chords. Each line shows a sequence of notes and rests, with repeat signs indicating where to return to the beginning of the line. The notes are: C7 (C4, D4, E4, F4, G4, A4, B4, C5), F7 (F3, G3, A3, B3, C4, D4, E4, F4), and G7 (G3, A3, B3, C4, D4, E4, F4, G4).

Final ending is C7

The Blues Scale or Minor Pentatonic Scale may be played at anytime in the blues. Use it for variety.

C BLUES SCALE

Notation for the C Blues Scale: C4, D4, E4, F4, G4, A4, B4, C5.

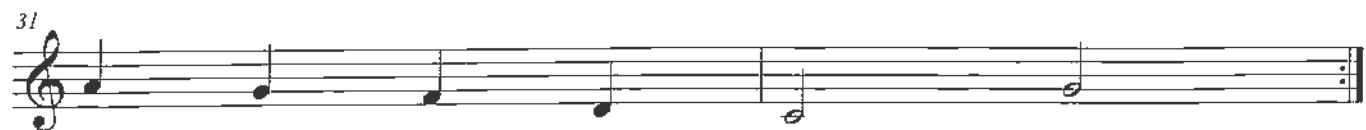
C Minor Pentatonic Scale

Notation for the C Minor Pentatonic Scale: C4, D4, E4, F4, G4, C5.

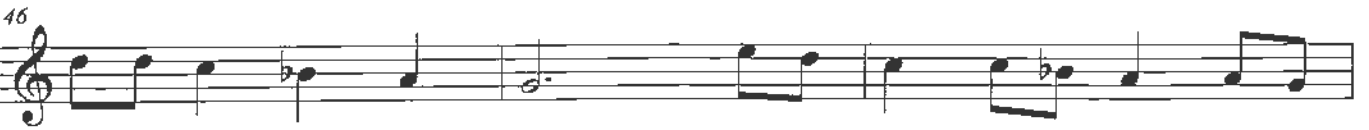
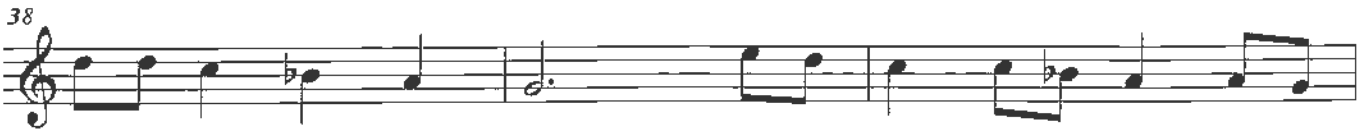
Clarinet in B \flat

Holiday Music for Nursing Home

Jingle Bells



33 Let it Snow!



58 Deck the Hall



63



68



74



79 Jingle Bell Rock



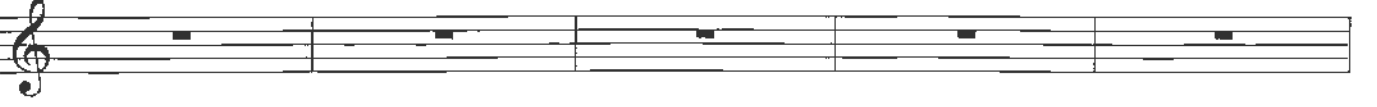
84



89



95



100



143 Dreidel Song



145



151



157

